

MILLER 
THE RIGHT FEEL

combo **LIVE** 30

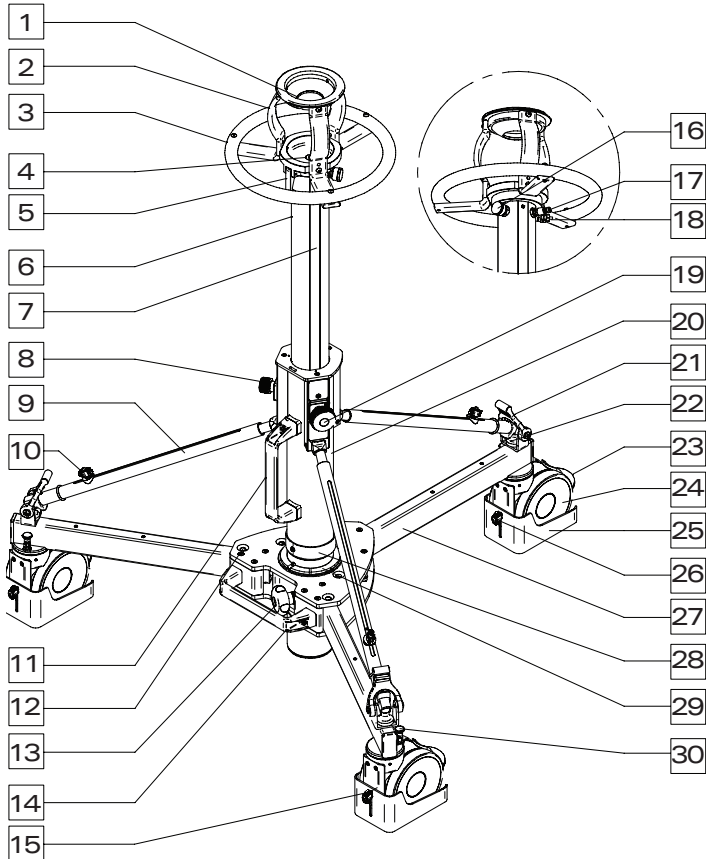
PEDESTAL

OPERATOR'S
MANUAL



#3220 Combo Live 30 Pedestal

Features and Controls



1	100mm bowl
2	Bowl brackets
3	Steering wheel
4	Main bolt top plate
5	Lock lever pressure column
6	Pressure column
7	Guide strip (3x)
8	Drag control knob pressure column
9	Telescopic support arm
10	Lock knob telescopic arm
11	Pedestal carry handle
12	Dolly leg release pin
13	Dolly column clamp knob
14	Dolly carrying handle
15	Wheel and cable guard assembly

16	Pressure gauge
17	Schrader valve
18	Pressure relief valve
19	Lock knob pressure column
20	Pedestal outer column
21	Rubber stirrup
22	Adjustable ball mount support arm
23	Wheel brake
24	125mm wheel
25	Cable guard
26	Cable guard height adjustment knob
27	Dolly leg
28	Transport strap support arms
29	Combo Live 30 dolly adapter
30	Wheel track lock
31	Adaptor plate for extension unit (Fig. 4)
32	Mounting bolts adaptor (M6x20 DIN912) (Fig. 4)
33	Mount screw extension unit (Fig. 4)
34	Extension assembly 315mm (12.4") (Fig. 4 opt.)
35	Mount screw weight bag (Fig. 4)
36	Weight bag 5.6kg (12.3lbs) (Fig. 4 opt.)
37	Mount hole weight bag (Fig. 4)

Safety Warning

- **WARNING** Lock lever pressure column (5) must be engaged in the locked position and the Pressure column must be de-pressurised when removing or adding camera payload to the Combo Live pedestal.
- **WARNING** The Pressure column (6) must be de-pressurised when storing or transporting the Combo Live pedestal.

Introduction

Thank you for purchasing the Combo Live 30 pedestal.

Miller Combo Live pedestal series offers light weight portability with air adjustable column system that provides wide height range 810mm (31.8") up to 1690mm (66.5") with extension (opt.), precise, smooth, low noise in-shot 450mm (17.7") stroke for maximum payloads up to 30kg (66lbs).

With its sturdy construction it delivers maximum stability with reliable and simple to use features. This makes the Combo Live Pedestal series a high performer offering perfect option for live broadcast studios looking for a versatile pedestal that punches above its weight.

The Combo Live 30 pedestal can easily be disassembled for transportation purposes.

- Compact and portable with carry handle for column & dolly.
- Wide height range 810mm (31.8") up to 1690mm (66.5") with extension (opt.).
- Precise, smooth and low noise In-shot column with 450mm (17.7") stroke.
- Simple and easy to setup and use with Drag control knob pressure column (8) and Lock lever pressure column (5).
- Air adjustable column system for quick payload balancing.
- Independent dolly wheel axle brake system eliminates wheel tyre indents.
- Multiple wheel positions for linear or radius dolly tracking.
- 125mm (4.9") dual ball bearing wheels for quick swivel-turn action.
- Centre hub locking column with adjustable spider arm supports.
- Steering wheel diameter 294mm (11.6").
- Dolly tracking width 970mm (38.2").
- Sturdy adjustable cable guards.
- Portable hand pump with pressure gauge.
- Weight bag to secure dolly 5.6kg (12.3lbs) (opt.).

Operation Manual

Please read this manual carefully prior to using the Combo Live pedestal. Do not omit any steps.

The manual contains important camera mounting setup information and should be read in conjunction with the operating manuals of the fluid head and camera you have chosen to complement your Combo Live pedestal.

Pedestal Column & Dolly Set-up

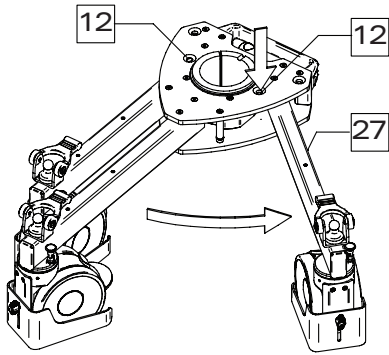


Fig. 1

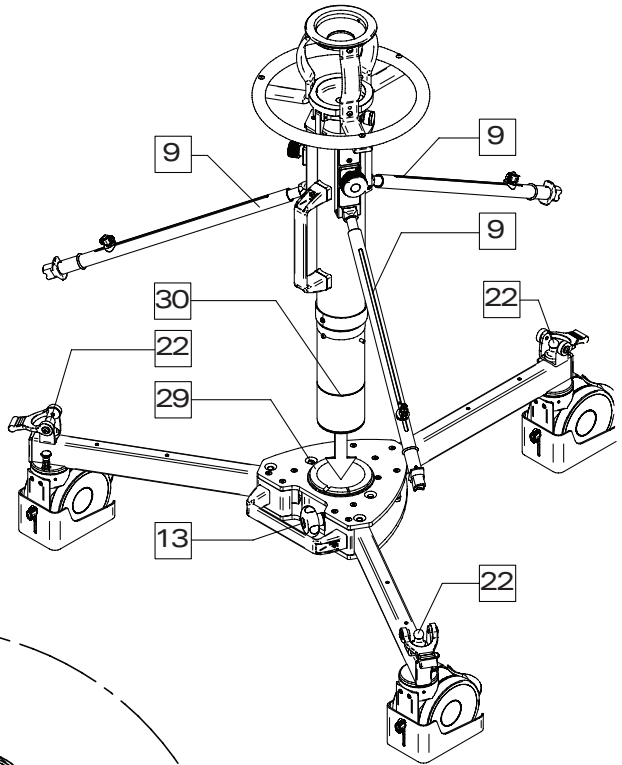


Fig. 2

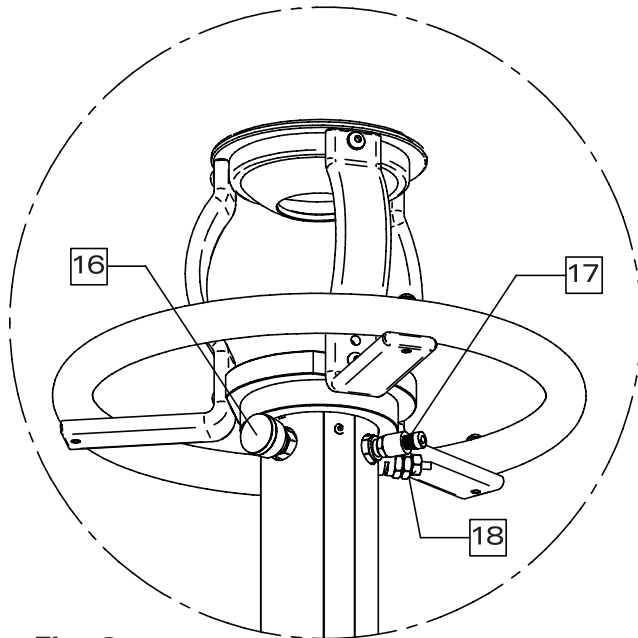
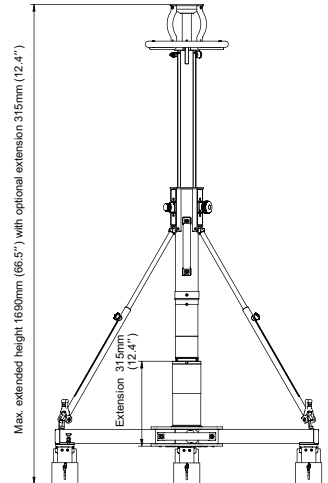
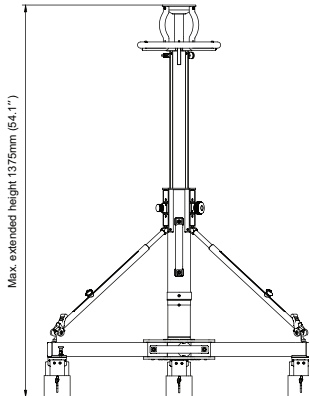
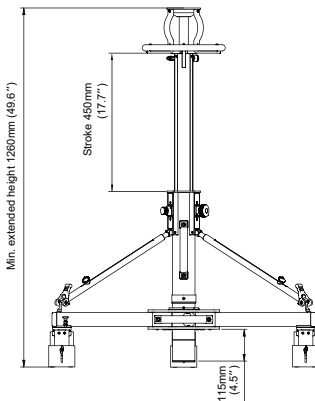
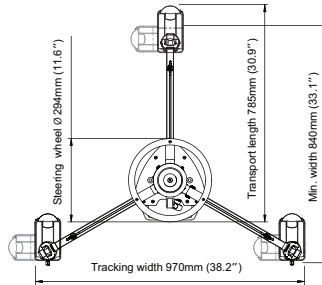
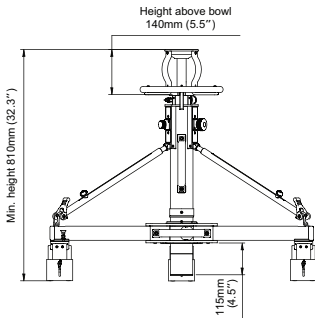


Fig. 3

Specifications

Weight Total	17.7kg (38.9lbs)
Weight Dolly	9.2kg (20.2lbs)
Weight Column	8.5kg (18.7lbs)
Payload range (column)	30.0kg (66.0lbs)
Column in-shot stroke	450mm (17.7")
Min. height	810mm (31.9")
Max. height	1375mm (54.1")
Max. height with extension (opt.)	1690mm (66.5")
Tracking width	970mm (38.2")
Steering wheel diameter	294mm (11.6")
Mounting base	Bowl type
Bowl diameter	∅100mm (3.9")
Wheel diameter	∅125mm (4.9")
Transport width (pedestal)	294mm (11.6")
Transport height (pedestal)	810mm (31.9")
Transport length (dolly)	785mm (30.9")



Operating Instructions

- Before mounting camera ensure the Pedestal is on stable and flat ground.
- Tighten the Dolly column clamp knob (13) and engage the wheel brake (23).
- Check adjustable ball mounts support arms (22) are tensioned correctly against telescopic support arms (9).
- Lower the Pressure column (6) engage the Lock lever pressure column (5).
- If resistance is felt when lowering the Pressure column (6) it is recommended to exhaust all air out of the Pressure column (6).
- Attach the Fluid head to the 100mm bowl and tighten the clamp nut on the Fluid head (see Fluid head Operator's Manual).
- If required use optional Cat.# 378 75mm bowl adaptor to mount 75mm Fluid heads.
- Attach the camera and accessories to the Fluid head (see Fluid head Operator's Manual for detailed instructions).
- Before pressurising the Pressure column (6) ensure Lock lever (5), Drag control knob (8) and Lock knob (19) are fully released then attach hand pump.
- Pump up the Pressure column (6) until the camera rises to the desired balance. Test by lowering and lifting the Pressure column (6). If pressure needs to be reduced, push in the pin of the Schrader valve (17) momentarily using Schrader cap nipple.
- Adjust the Drag control knob pressure column (8) to achieve the desired stroke and feel.
- **WARNING** always engage the Lock lever pressure column (5) and de-pressurise the Pressure column (6) before removing the camera payload.

Service, Sales and Support

Contact Miller Service Centre or your nearest Miller Agent if a change of performance is observed as a result of dropping or rough usage. For information regarding sales and service of Miller products or for your nearest Miller representative please contact us via our website or at the following:

MILLER CAMERA SUPPORT EQUIPMENT

30 Hotham Parade
Artarmon, Sydney, NSW 2064 Australia
P +61 2 9439 6377
F +61 2 9438 2819
sales@miller.com.au

MILLER Camera Support (LLC) USA

216 Little Falls Road (Unit 15 & 16),
Cedar Grove, New Jersey 07009 USA
P +1 (973) 857 8300
F +1 (973) 857 8188
sales@millertripods.us

MILLER FLUID HEADS (EUROPE) LTD.

12A, Shepperton Business Park
Govett Avenue, Shepperton
Middlesex, TW17 8BA
United Kingdom
P +44 (0) 1932 222 888
F +44 (0) 1932 222 211
sales@millertripods-europe.com

MILLER 

millertripods.com

MILLER CAMERA SUPPORT EQUIPMENT

30 Hotham Parade
Artarmon, Sydney
NSW 2064 Australia
Tel: +61 2 9439 6377
Fax: +61 2 9438 2819
Email: sales@miller.com.au